

MTWB

*Customized
Bearings*

Agricultural Bearing



Mighty Way Industrial Limited

香港威鸿实业 有限公司

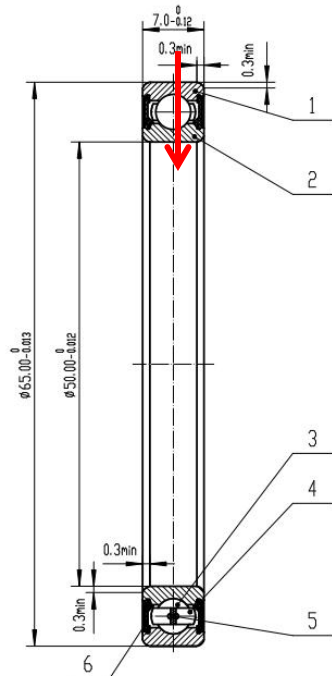
Room 13-15, 19/F, Nan Fung Centre
264-298 Castle Peak Road, Tsuen Wan, N.T., Hong Kong

Mobile: +86 13681771041

Email: sales@mtwbearing.com
13681771041@163.com

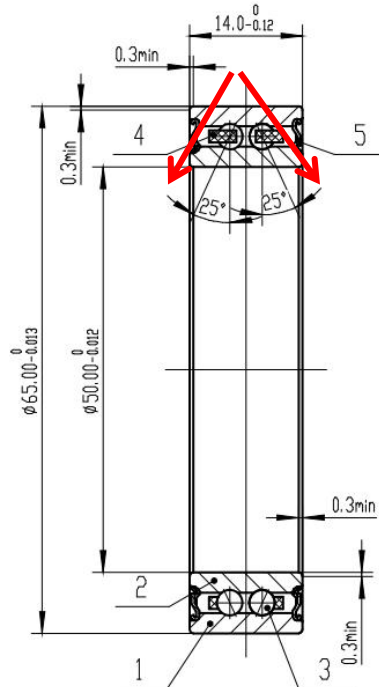
Neover Customized 6810-2RS for Kverneland Seeder

Loading Direction



Original Design

Loading Direction



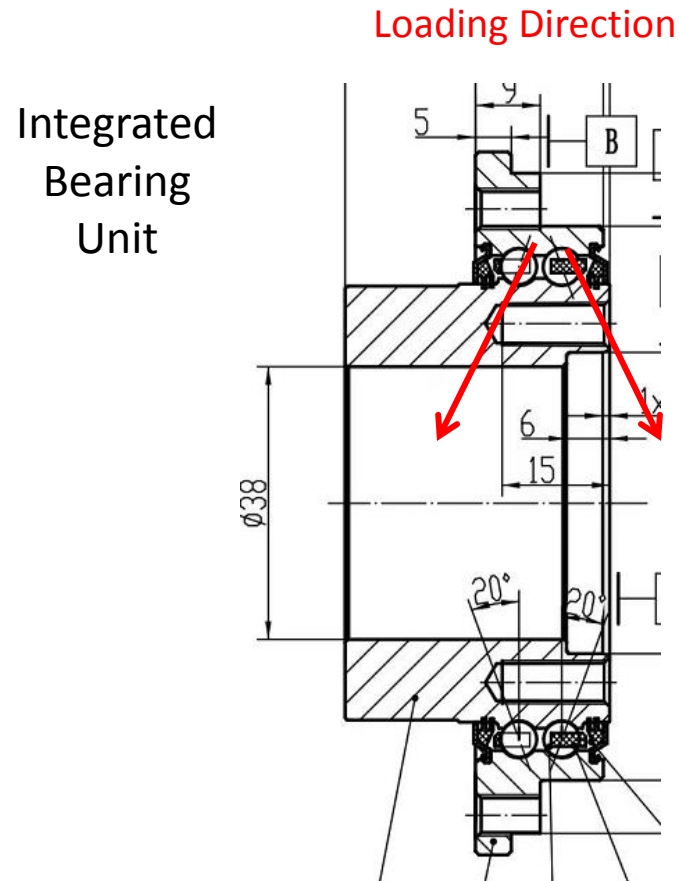
Customized Design

Advantages:

1. The optimized design has increased load capacity, meeting the operational requirements of Kverneland.
2. The optimized bearing can withstand both radial and axial loads, resulting in more stable rotation of the seeding disc.
3. Simplified installation reduces the risk of bearing failure during the assembly process.

Parameter	Original Design	Optimized Design
Bearing Type	Single Row Deep Groove Ball Bearing	Double Row Angular Contact Ball Bearing
Dynamic Load Rating (Cr)	13.2 kN	18.0 kN
Static Load Rating (Cor)	12.2 kN	28.0 kN
Load Capacity	Only withstands radial load.	Withstands both radial and axial loads.

Neover's Integrated Bearing Unit for Seeder

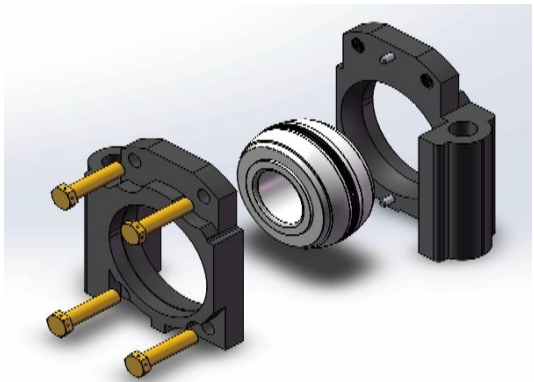


Advantages:

1. Increased load capacity.
2. Withstands both radial and axial loads for more stable seeding disc rotation.
3. The bearing no longer requires press-fitting installation; it is connected via bolts. This improves installation efficiency and prevents bearing damage from press-fitting.
4. Increased air outlet size from the original 30.5mm to 38mm, enhancing air pressure.

Parameter	Original Design	Optimized Design
Bearing Type	Single Row Deep Groove Ball Bearing	Double Row Angular Contact Integrated Unit Ball Bearing
Load Capacity	Only withstands radial load.	Withstands both radial and axial loads.

Neover W211RNNB57-TPU Housing



Longer Life & Reliability: During installation, a layer of sealant is first applied to the bearing housing surface. This ensures excellent sealing performance between the two housings after installation. Threadlocker adhesive is applied to the bolt threads before tightening, making the installation more secure and improving sealing.

High-Strength Fixation & Paired Installation: The housing utilizes a "remove one set, install one set" paired installation process to guarantee installation precision.