

MTWB

*Customized
Bearings*

EV Bearing



Mighty Way Industrial Limited

香港威鸿实业 有限公司

Room 13-15, 19/F, Nan Fung Centre
264-298 Castle Peak Road, Tsuen Wan, N.T., Hong Kong

Mobile: +86 13681771041

Email: sales@mtwbearing.com
13681771041@163.com

Case: BOSCH EV-6001 & 6907W15.5



- Designation: 6001
- OEM: BOSCH
- Working Condition: Disconnect
- Designation: 6907W15.5
- OEM: BOSCH
- Working Condition: Jackshaft

Product Design Characteristics

- Special channel design enhances rotational accuracy.
- Internal size adjustment improves lubrication efficiency and rotational accuracy.
- Adopt high-temperature-resistant, high-speed, silent grease.
- Select high-grade bearing steel from Jiangyin Xingcheng Special Steel.



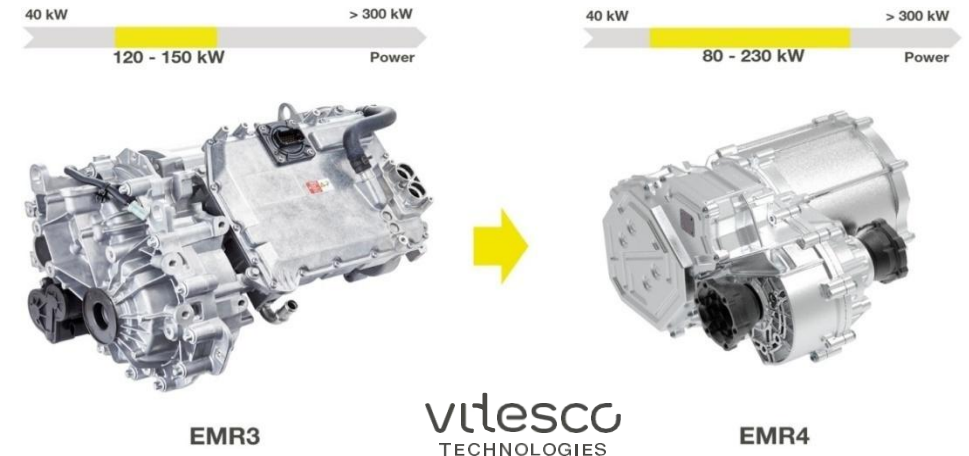
Case: Electric Drive System EMR4

Applied to 20+ vehicle models

The MR4 is highly integrated, modular and scalable, with a power range covering 80 kilowatts to 230 kilowatts.

At the same power level, the fourth-generation electric shaft drive system has reduced by 25% compared to the previous generation.

Has been used in the PSA electric vehicle project



Case: Electric Drive System EMR4

– 6006 & 6206

Product design features, max. operating speed

- OEM: Vitesco
- Application: Electric Drive System
- Max.Speed: 16000 RPM



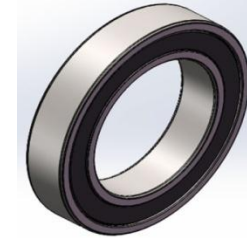
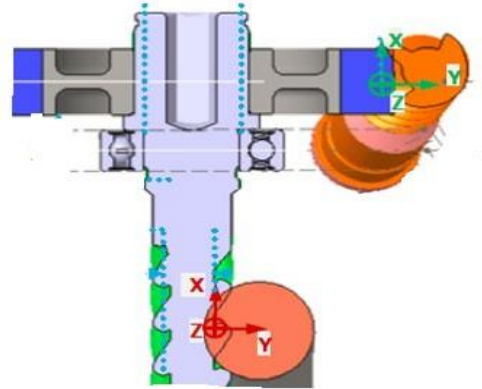
- Special channel curvature design enhances rotational accuracy.
- PA46 high-performance polyamide cage: High rigidity & high heat resistance (<math><250^{\circ}\text{C}</math>):
 1. Reduces deformation of the cage during high-speed rotation.
 2. Torque resistance is reduced by 50%.
 3. Extremely high wear resistance hence longer life span.
 4. Lighter weight, lower noise (V4 group or above).
- Internal size adjustment improves lubrication efficiency and rotational accuracy.
- Selects high-temperature resistant, high-speed silent grease.
- Selects high-grade bearing steel from Jiangyin Xingcheng Special Steel.

Case: Steering System

Designation: QJ205

OEM: Geely, Fiat, Daimler (ZF)

Application: Worm Shaft



HJSB
四捷精密



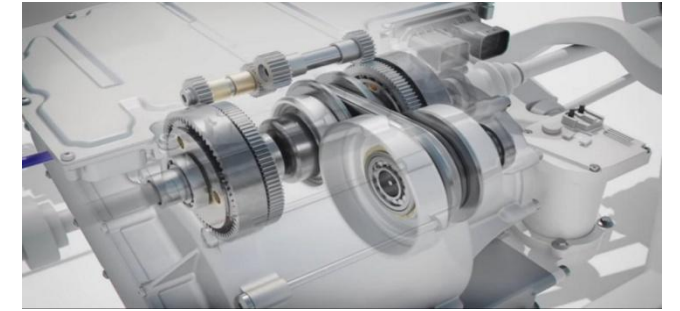
Product Design Characteristics

- High-purity bearing steel is selected.
- Special groove and dust-proof groove processing technology.
- The sealing ring structure is designed as a three-lip structure, with 100% air-tightness testing.
- The sealing performance and bearing capacity of the bearing is improved.
- Compared with ordinary four-point contact bearings, the axial force and radial force are increased by 30%.

Case: BOSCH CVT for EV – 6001



- 6001
- OEM: BOSCH
- Working Condition: Disconnect



Product Design Characteristics

- Special design enhances rotational accuracy.
- Adjusted internal dimensions improves lubrication efficiency and rotational accuracy.
- High-temperature-resistant, high-speed and silent grease is selected.
- High-grade bearing steel from Jiangyin Xingcheng Special Steel is selected.